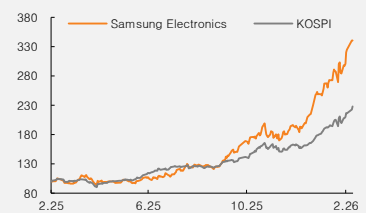


(Maintain)	Buy
Target price	▲ W275,000
Current price (2/20/26)	W190,100
Upside	44.7%

OP (25P, Wbn)	43,627
Consensus OP (25F, Wbn)	-
EPS growth (25P, %)	32.7
Market EPS growth (25F, %)	36.0
P/E (25P, x)	18.3
Market P/E (25F, x)	20.0
KOSPI	5,808.53

Market cap (Wbn)	1,125,323
Shares (mn)	5,920
Free float (%)	75.1
Foreign ownership (%)	51.1
Beta (12M)	1.16
52-week low (W)	53,000
52-week high (W)	190,100

(%)	1M	6M	12M
Absolute	30.9	169.6	225.5
Relative	10.1	45.3	48.7



Mirae Asset Securities Co., Ltd.

Young-gun Kim
younggun.kim.a@miraeasset.com

Sehoon Jung
sehoon.jung@miraeasset.com

Samsung Electronics

Regaining its technological edge

Operating leverage to kick in amid accelerating memory price growth

We raise our target price for Samsung Electronics (SEC) to W275,000 (from W247,000). Using a sum-of-the-parts (SOTP) valuation, we estimate the company's fair value at W1,725tr, including W1,530tr for the memory business. Based on 2026F EPS and BPS, our target price implies a P/E of 9.1x and a P/B of 3.2x, both of which remain below the respective industry averages of 14.4x and 4.2x.

Memory contract prices have recently shifted back to an upward trajectory. Regarding year-end PC DRAM price levels, forecasts (TrendForce) have been raised by an additional 9.6% for DDR5 and 5.9% for DDR4, bringing cumulative upside relative to Feb. 2026 prices to 28.3% and 18.3%, respectively. NAND price estimates have also been revised upward, with year-end 1Tb wafer projections lifted by 48.2% for QLC and 45.4% for TLC.

For 1Q26, we expect SEC to post revenue of W118tr (+26.0% QoQ) and operating profit of W37tr (+86.2% QoQ). While our bit growth assumptions remain unchanged, we now forecast ASP growth at 45% for both DRAM and NAND (+13%p and +5%p vs. our previous estimates, respectively). With shipment estimates holding steady, higher pricing should drive meaningful operating leverage; accordingly, we raised our OP margin estimate for the DS unit by 4.4%p.

For 2026, we now forecast revenue at W562tr (+68.4% YoY) and operating profit at W227tr (+419% YoY), which are 12.4% and 35.8%, respectively, above our previous estimates. While our DRAM and NAND bit growth assumptions remain unchanged at +24% and +19%, respectively, we lifted our ASP growth estimates by 56.1%p for DRAM and 36.1%p for NAND to reflect the ongoing memory rally. We also raised our HBM ASP growth forecast by 9%p, reflecting the expected increase in the HBM4 mix from 2Q26.

Regaining its technological edge

At the 2026 International Solid-State Circuits Conference (ISSCC) held last week, SEC disclosed the detailed specifications and applied technologies for its HBM4 chip. The new chip achieved a 2.6x expansion in bandwidth vs. the prior generation, reaching a theoretical maximum of 3.3TB/s per chip with a maximum per-pin speed of 13Gbps. Operating voltage was also reduced by 5–32%. Furthermore, the company has directly embedded test circuitry within the chip via fully programmable memory built-in self-test (MBIST) technology, enhancing reliability for end-customers.

These advances were enabled not only by strengthened circuit design capabilities but also through the adoption of a base die built on the 4nm FinFET logic process, signaling the beginning of meaningful synergies between the memory and foundry businesses. In addition, the company unveiled a prototype of its next-generation 4F² DRAM, which applies hybrid bonding technology. SEC reported a 20% increase in net die per wafer with this prototype vs. the conventional 6F² cell structure.

(Dec.)	2023	2024	2025P	2026F	2027F
Revenue (Wbn)	258,935	300,871	333,569	561,728	659,010
OP (Wbn)	6,567	32,726	43,627	226,559	285,983
OP margin (%)	2.5	10.9	13.1	40.3	43.4
NP (Wbn)	14,473	33,621	44,278	208,837	269,900
EPS (W)	2,131	4,950	6,566	31,005	40,071
ROE (%)	4.1	9.0	10.9	39.9	35.8
P/E (x)	36.8	10.7	18.3	6.1	4.7
P/B (x)	1.5	0.9	1.9	2.0	1.4
Dividend yield (%)	1.8	2.7	1.2	0.8	0.8

Notes: Under consolidated K-IFRS; NP is attributable to owners of the parent
Source: Company data, Mirae Asset Securities Research estimates

Table 1. SEC: SOTP valuation

	2026F EBITDA (Wtr)	Target EV/EBITDA (x)	Implied EV	Notes
Operating value (Wtr)	275.7	6.3	1,724.8	
DX	14.2	6.9	97.6	
MX/NW	12.5	6.9	86.2	50% discount to avg. of Xiaomi and Apple
VD/DA	1.7	6.6	11.5	Avg. of LG Electronics and Whirlpool
DS	250.5	6.3	1,574.9	
Memory	244.7	6.3	1,530.4	Avg. of SK Hynix, Micron, and Kioxia
Foundry/LSI	5.8	7.7	44.5	30% discount to avg. of TSMC, GlobalFoundries, and Intel
Samsung Display	8.6	4.3	36.4	Avg. of Innolux, BOE, and AUO
Harman	2.4	6.5	15.9	Avg. of Hyundai Mobis and HL Mando
	Market cap (Wtr)	Stake (%)	Value	
Equity stake value (Wtr)			111.0	
Listed			57.6	
Samsung Biologics	80.4	31.2	25.1	
Samsung Epis Holdings	15.3	38.6	5.9	
SEMCO	28.2	23.7	6.7	
Samsung SDI	32.4	19.4	6.3	
Samsung SDS	13.3	22.6	3.0	
Other			10.7	
Unlisted			53.3	
Net debt (Wtr)			-91.8	
Fair market cap (Wtr)			1,872	50% discount to equity stake value reflected
No. of shares (mn)			6,793	Common + preferred
Fair value/share (W)			275,603	
Target price (W)			275,000	
Current price (W)			190,100	
Upside (%)			44.7	

Source: LSEG, Mirae Asset Securities Research

Table 2. SEC: Earnings outlook

(Wtr, %)

	1Q25	2Q25	3Q25	4Q25P	1Q26F	2Q26F	3Q26F	4Q26F	2024	2025P	2026F	2027F
USD/KRW	1,453	1,402	1,386	1,450	1,443	1,445	1,445	1,445	1,363	1,422	1,444	1,431
QoQ/YoY	4.0	-3.5	-1.2	4.6	-0.5	0.2	0.0	0.0	4.4	4.3	1.5	-1.0
Revenue	79.1	74.6	86.1	93.8	118.2	133.7	156.4	153.4	300.9	333.6	561.7	659.0
DX	51.7	43.6	48.4	44.3	53.8	45.5	54.1	46.2	174.9	188.0	199.5	208.2
DS	25.1	27.9	33.1	44.0	63.3	84.8	96.6	100.3	111.1	130.1	344.9	431.6
Samsung Display	5.9	6.4	8.1	9.5	5.8	7.1	9.3	9.9	29.2	29.8	32.2	34.0
Harman	3.4	3.8	4.0	4.6	3.2	4.6	4.5	4.0	14.3	15.8	16.4	17.8
QoQ/YoY	4.4	-5.8	15.4	9.0	26.0	13.2	16.9	-1.9	16.2	10.9	68.4	17.3
DX	27.6	-15.8	11.0	-8.4	21.5	-15.6	18.9	-14.6	2.9	7.5	6.2	4.4
DS	-16.5	10.9	18.8	32.9	43.9	33.9	13.9	3.8	66.8	17.2	165.1	25.1
Samsung Display	-27.8	8.7	27.0	17.3	-38.6	21.8	31.0	6.6	-5.9	2.4	7.8	5.5
Harman	-12.9	12.0	3.2	16.3	-29.4	41.5	-1.1	-11.9	-0.8	10.7	3.7	8.8
OP	6.7	4.7	12.2	20.1	37.4	54.2	66.7	68.2	32.7	43.6	226.6	286.0
DX	4.7	3.3	3.5	1.3	2.9	1.6	3.0	1.8	12.4	12.8	9.4	10.5
DS	1.1	0.4	7.0	16.4	33.6	50.9	61.1	63.8	15.1	24.8	209.3	266.7
Samsung Display	0.5	0.5	1.2	2.0	0.6	1.1	1.9	2.1	3.7	4.2	5.7	6.4
Harman	0.3	0.5	0.4	0.3	0.3	0.6	0.6	0.4	1.3	1.5	1.9	2.2
QoQ/YoY	3.0	-30.1	160.2	65.2	86.2	44.9	22.9	2.3	398.3	33.3	419.3	26.2
DX	108.0	-29.6	4.3	-62.5	125.4	-43.7	84.0	-40.1	-13.5	3.0	-26.4	10.9
DS	-61.4	-68.3	1,896.4	134.6	104.7	51.5	20.2	4.4	TTB	64.6	742.5	27.4
Samsung Display	-46.8	2.4	158.8	63.3	-68.8	74.3	73.8	11.8	-32.9	11.4	37.6	11.3
Harman	-21.6	57.6	-13.1	-28.7	-15.1	131.4	-2.1	-23.3	11.4	15.6	23.4	19.2
OP margin	8.4	6.3	14.1	21.4	31.7	40.5	42.6	44.5	10.9	13.1	40.3	43.4
DX	9.1	7.6	7.2	2.9	5.4	3.6	5.6	3.9	7.1	6.8	4.7	5.0
DS	4.4	1.3	21.1	37.3	53.0	60.0	63.3	63.6	13.6	19.1	60.7	61.8
Samsung Display	7.9	7.4	15.1	21.1	10.7	15.3	20.3	21.3	12.8	13.9	17.8	18.8
Harman	9.0	12.6	10.6	6.5	7.8	12.8	12.7	11.1	9.2	9.6	11.4	12.5
EBITDA	18.2	16.0	24.0	32.2	49.8	66.8	79.3	81.1	75.4	90.4	277.0	339.1
DX	5.8	4.4	4.6	2.5	4.1	2.8	4.2	3.0	16.7	17.3	14.1	15.1
DS	10.6	9.7	16.8	26.4	43.9	61.3	71.7	74.5	49.9	63.5	251.3	311.4
Samsung Display	1.1	1.1	1.9	2.7	1.3	1.8	2.6	2.8	6.4	6.9	8.6	9.2
Harman	0.4	0.6	0.6	0.4	0.4	0.7	0.7	0.6	1.9	2.1	2.4	2.8
QoQ/YoY	1.2	-11.9	49.6	34.2	54.8	34.0	18.8	2.2	66.6	20.0	206.4	22.4
DX	73.7	-24.0	4.6	-46.6	66.3	-31.4	49.3	-29.0	-10.6	3.7	-18.6	7.3
DS	-14.1	-8.6	72.6	57.2	66.3	39.8	16.9	4.0	227.1	27.3	295.8	23.9
Samsung Display	-26.8	0.7	65.0	44.1	-50.7	34.8	44.7	8.6	-28.1	7.2	24.8	7.6
Harman	-15.9	38.9	-10.0	-20.2	-10.1	83.7	-1.7	-18.6	9.1	11.4	18.2	14.6
Capex	12.0	11.1	9.2	20.4	16.0	16.2	16.2	16.4	53.6	52.7	64.8	75.6
DS	10.9	9.8	7.8	19.0	14.9	14.9	14.9	14.9	46.3	47.5	59.6	70.4
Samsung Display	0.5	0.8	0.8	0.7	0.5	0.7	0.7	0.8	4.8	2.8	2.7	2.7
Other	0.6	0.5	0.5	0.8	0.5	0.6	0.6	0.7	2.5	2.4	2.5	2.5
QoQ/YoY	-32.6	-7.5	-17.5	123.4	-21.9	1.5	0.0	1.5	1.0	-1.8	23.0	16.7
DS	-31.4	-10.7	-20.3	143.4	-21.4	0.0	0.0	0.0	-4.3	2.6	25.5	18.1
Samsung Display	-48.8	61.2	4.2	-19.8	-20.5	25.0	0.0	20.0	102.7	-42.1	-5.0	0.0
Others	-36.2	-6.2	0.5	54.1	-34.3	19.7	0.0	16.5	7.5	-5.2	5.5	0.0
FCF	6.2	4.9	14.8	11.7	33.9	50.6	63.1	64.6	21.7	37.7	212.2	263.4
DS	-0.3	-0.1	9.0	7.4	29.0	46.4	56.8	59.6	3.6	16.0	191.7	240.9
Samsung Display	0.6	0.3	1.0	2.0	0.8	1.1	1.9	2.0	1.6	4.1	5.9	6.5
Other	5.9	4.7	4.8	2.3	4.1	3.1	4.4	3.0	16.6	17.7	14.6	16.0

Source: Company data, Mirae Asset Securities Research

Table 3. SEC: Earnings forecast revisions

(Wtr, %, %p)

	1Q26F			2026F			2027F		
	Revised	Previous	Chg.	Revised	Previous	Chg.	Revised	Previous	Chg.
USD/KRW	1,443	1,460	-1.2	1,444	1,460	-1.1	1,431	1,445	-1.0
Revenue	118.2	114.9	2.9	561.7	499.9	12.4	659.0	560.3	17.6
DX	53.8	54.2	-0.7	199.5	200.6	-0.6	208.2	209.3	-0.5
DS	63.3	59.6	6.2	344.9	281.9	22.4	431.6	331.7	30.1
Samsung Display	5.8	5.9	-1.1	32.2	32.5	-1.0	34.0	34.3	-0.9
Harman	3.2	3.2	0.0	16.4	16.4	0.0	17.8	17.8	0.0
OP	37.4	32.9	13.7	226.6	166.8	35.8	286.0	195.8	46.0
DX	2.9	3.0	-1.8	9.4	9.6	-1.8	10.5	10.6	-1.6
DS	33.6	29.0	15.8	209.3	149.3	40.2	266.7	176.3	51.3
Samsung Display	0.6	0.6	-3.6	5.7	5.8	-2.0	6.4	6.5	-1.8
Harman	0.3	0.3	0.0	1.9	1.9	0.0	2.2	2.2	0.0
OP margin	31.7	28.7	3.0	40.3	33.4	7.0	43.4	35.0	8.4
DX	5.4	5.5	-0.1	4.7	4.8	-0.1	5.0	5.1	-0.1
DS	53.0	48.6	4.4	60.7	53.0	7.7	61.8	53.2	8.6
Samsung Display	10.7	11.0	-0.3	17.8	18.0	-0.2	18.8	18.9	-0.2
Harman	7.8	7.8	0.0	11.4	11.4	0.0	12.5	12.5	0.0
EBITDA	49.8	45.3	10.0	277.0	217.3	27.5	339.1	249.0	36.2
DX	4.1	4.1	-1.3	14.1	14.2	-1.2	15.1	15.3	-1.1
DS	43.9	39.3	11.7	251.3	191.3	31.4	311.4	221.0	40.9
Samsung Display	1.3	1.4	-1.7	8.6	8.7	-1.3	9.2	9.3	-1.3
Harman	0.4	0.4	0.0	2.4	2.4	0.0	2.8	2.8	0.0
Capex	16.0	16.1	-0.7	64.8	65.3	-0.7	75.6	76.1	-0.6
DS	14.9	15.0	-0.7	59.6	60.1	-0.7	70.4	70.9	-0.7
Samsung Display	0.5	0.5	0.0	2.7	2.7	0.0	2.7	2.7	0.0
Other	0.5	0.5	0.0	2.5	2.5	0.0	2.5	2.5	0.0
FCF	33.9	29.2	15.8	212.2	152.0	39.6	263.4	172.9	52.4
DS	29.0	24.2	19.4	191.7	131.3	46.0	240.9	150.1	60.5
Samsung Display	0.8	0.8	-2.9	5.9	6.0	-1.9	6.5	6.7	-1.8
Other	4.1	4.2	-1.3	14.6	14.8	-1.2	16.0	16.1	-1.0

Source: Mirae Asset Securities Research

Table 4. SEC: DS earnings outlook

(Wtr, %)

	1Q25	2Q25	3Q25	4Q25P	1Q26F	2Q26F	3Q26F	4Q26F	2024	2025P	2026F	2027F
Revenue	25.1	27.9	33.1	44.0	63.3	84.8	96.6	100.3	111.1	130.1	344.9	431.6
DRAM	13.2	14.5	18.7	28.1	42.0	56.9	66.3	70.3	54.4	74.5	235.5	311.9
NAND	5.8	6.7	8.0	9.4	14.6	19.8	22.9	22.2	30.1	29.9	79.5	85.5
Foundry/LSI	6.1	6.7	6.4	6.5	6.7	8.0	7.4	7.8	26.6	25.7	29.9	34.2
QoQ/YoY	-16.5	10.9	18.8	32.9	43.9	33.9	13.9	3.8	66.8	17.2	165.1	25.1
DRAM	-15.8	9.8	28.9	50.3	49.4	35.5	16.5	6.0	89.8	37.1	215.9	32.4
NAND	-19.3	14.0	19.7	17.7	55.8	35.2	15.5	-3.0	94.5	-0.6	165.9	7.6
Foundry/LSI	-15.1	10.5	-4.0	1.0	2.8	20.5	-8.0	5.4	18.4	-3.5	16.4	14.4
OP	1.1	0.4	7.0	16.4	33.6	50.9	61.1	63.8	15.1	24.8	209.3	266.7
DRAM	3.7	3.6	7.1	15.8	28.0	40.2	47.7	50.7	16.8	30.2	166.6	214.9
NAND	-0.8	-0.5	0.7	2.4	7.3	11.9	14.8	14.3	3.5	1.8	48.2	54.6
Foundry/LSI	-1.8	-2.7	-0.8	-1.7	-1.7	-1.2	-1.4	-1.1	-5.3	-7.2	-5.4	-2.8
QoQ/YoY	-61.4	-68.3	1,896.4	134.6	104.7	51.5	20.2	4.4	TTB	64.6	742.5	27.4
DRAM	-21.4	-2.0	95.9	122.0	77.5	43.5	18.8	6.1	TTB	79.4	451.3	29.0
NAND	TTR	RR	TTB	225.7	207.3	63.6	24.1	-3.5	TTB	-49.1	2,578.1	13.3
Foundry/LSI	RR	RR	RR	RR	RR	RR	RR	RR	RR	RR	RR	RR
OP margin	4.4	1.3	21.1	37.3	53.0	60.0	63.3	63.6	13.6	19.1	60.7	61.8
DRAM	28.0	25.0	38.0	56.1	66.7	70.6	72.0	72.1	31.0	40.5	70.7	68.9
NAND	-13.0	-8.0	9.1	25.2	49.7	60.1	64.5	64.2	11.8	6.0	60.6	63.8
Foundry/LSI	-30.3	-41.0	-13.1	-26.9	-25.7	-15.3	-18.7	-14.3	-19.9	-27.9	-18.2	-8.1
EBITDA	10.4	9.5	16.6	26.2	43.6	61.1	71.5	74.3	49.2	62.7	250.5	310.5
DRAM	6.8	6.9	10.8	19.8	32.3	44.8	52.6	55.9	27.2	44.3	185.6	235.7
NAND	1.8	2.1	3.6	5.4	10.2	14.7	17.4	16.8	13.5	12.8	59.1	63.7
Foundry/LSI	1.8	0.5	2.2	1.0	1.2	1.6	1.4	1.5	8.4	5.5	5.8	11.2
Capex	10.9	9.8	7.8	19.0	14.9	14.9	14.9	14.9	46.3	47.5	59.6	70.4
DRAM	5.5	4.9	3.5	6.6	8.9	8.9	8.9	3.5	18.4	20.5	30.3	32.9
NAND	3.3	3.4	2.3	3.8	3.0	3.0	3.0	1.2	13.0	12.8	10.1	14.3
Foundry/LSI	2.2	1.5	1.9	8.6	3.0	3.0	3.0	10.2	14.9	14.2	19.2	23.2

Source: Company Data, Mirae Asset Securities Research

Table 5. SEC: Memory revenue outlook

	1Q25	2Q25	3Q25	4Q25P	1Q26F	2Q26F	3Q26F	4Q26F	2024	2025P	2026F	2027F
USD/KRW	1,453	1,402	1,386	1,450	1,443	1,445	1,445	1,445	1,363	1,422	1,444	1,431
QoQ/YoY (%)	4.0	-3.5	-1.2	4.6	-0.5	0.2	0.0	0.0	4.4	4.3	1.5	-1.0
DRAM												
Revenue (US\$bn)	9.1	10.4	13.5	19.4	29.1	39.4	45.9	48.6	39.8	52.3	163.0	218.0
QoQ/YoY (%)	-19.1	13.7	30.4	43.7	50.2	35.3	16.5	6.0	81.8	31.5	211.5	33.7
Bit shipments (bn Gb)	20.5	22.8	26.2	26.7	27.6	29.3	30.7	31.8	88.8	96.2	119.4	143.2
QoQ/YoY (%)	1.0	11.0	15.0	2.1	3.3	6.0	4.8	3.8	13.0	8.3	24.2	19.9
ASP (US\$)	0.44	0.45	0.52	0.73	1.05	1.35	1.50	1.53	0.45	0.54	1.37	1.52
QoQ/YoY (%)	-19.9	2.5	13.4	40.7	45.3	27.6	11.1	2.1	60.8	21.3	150.9	11.5
Conventional												
Revenue (US\$bn)	8.1	9.0	11.4	16.5	26.3	35.9	40.7	41.5	33.0	45.0	144.4	186.6
QoQ/YoY (%)	2.9	11.0	25.9	45.0	59.7	36.5	13.3	2.0	62.3	36.3	220.9	29.2
Bit shipments (bn Gb)	19.9	21.9	24.7	24.7	25.5	26.7	27.5	28.1	83.7	91.2	107.8	126.3
QoQ/YoY (%)	11.1	9.9	13.1	0.0	3.0	5.0	3.0	2.0	8.2	9.0	18.3	17.1
ASP (US\$)	0.41	0.41	0.46	0.67	1.03	1.34	1.48	1.48	0.39	0.49	1.34	1.48
QoQ/YoY (%)	-7.4	0.9	11.3	45.0	55.0	30.0	10.0	0.0	50.1	25.0	171.4	10.3
HBM												
Revenue (US\$bn)	1.0	1.3	2.1	2.9	2.8	3.5	5.2	7.1	6.8	7.3	18.6	31.4
QoQ/YoY (%)	-71.1	37.1	61.1	36.6	-3.5	23.7	49.1	37.6	336.8	7.9	153.6	69.1
% of DRAM	10.6	12.8	15.8	15.0	9.6	8.8	11.3	14.7	17.1	14.0	11.4	14.4
Shipments (bn Gb)	0.6	0.9	1.5	2.0	2.1	2.5	3.1	3.8	5.1	5.0	11.6	16.9
QoQ/YoY (%)	-74.1	45.2	61.1	37.9	7.2	17.8	24.2	19.6	334.2	-2.8	132.7	46.1
% of DRAM	3.0	4.0	5.5	7.5	7.8	8.6	10.2	11.8	5.8	5.2	9.7	11.8
ASP (US\$)	1.56	1.47	1.47	1.46	1.31	1.38	1.65	1.90	1.3	1.5	1.6	1.9
QoQ/YoY (%)	11.6	-5.5	0.0	-1.0	-10.0	5.0	20.0	15.0	0.6	11.0	9.0	15.7
NAND												
Revenue (US\$bn)	4.0	4.8	5.8	6.5	10.2	13.7	15.8	15.4	22.1	21.0	55.0	59.8
QoQ/YoY (%)	-22.5	18.2	21.2	12.5	56.6	35.0	15.5	-3.0	86.4	-4.6	161.8	8.6
Shipments (bn GB)	61.6	77.6	85.4	76.9	83.0	89.7	94.1	91.3	298.1	301.6	358.2	398.8
QoQ/YoY (%)	-10.0	26.0	10.0	-10.0	8.0	8.0	5.0	-3.0	11.0	1.2	18.8	11.3
ASP (US\$)	0.07	0.06	0.07	0.08	0.12	0.15	0.17	0.17	0.07	0.07	0.15	0.15
QoQ/YoY (%)	-13.8	-6.2	10.1	25.0	45.0	25.0	10.0	0.0	67.9	-5.7	120.4	-2.5

Source: Company data, Mirae Asset Securities Research

Table 6. SEC: DS earnings forecast revisions

(Wtr, %, %p)

	1Q26F			2026F			2027F		
	Revised	Previous	Chg.	Revised	Previous	Chg.	Revised	Previous	Chg.
Revenue	63.3	59.6	6.2	344.9	281.9	22.4	431.6	331.7	30.1
DRAM	42.0	38.7	8.7	235.5	184.8	27.4	311.9	231.6	34.7
NAND	14.6	14.3	2.3	79.5	67.2	18.3	85.5	65.9	29.7
Foundry/LSI	6.7	6.7	0.0	29.9	29.9	0.0	34.2	34.2	0.0
OP	33.6	29.0	15.8	209.3	149.3	40.2	266.7	176.3	51.3
DRAM	28.0	24.2	15.7	166.6	119.5	39.4	214.9	143.8	49.5
NAND	7.3	6.5	12.0	48.2	35.2	36.7	54.6	35.3	54.8
Foundry/LSI	-1.7	-1.7	RR	-5.4	-5.5	RR	-2.8	-2.8	RR
OP margin	53.0	48.6	4.4	60.7	53.0	7.7	61.8	53.2	8.6
DRAM	66.7	62.6	4.1	70.7	64.7	6.1	68.9	62.1	6.8
NAND	49.7	45.3	4.3	60.6	52.4	8.1	63.8	53.5	10.4
Foundry/LSI	-25.7	-25.7	0.0	-18.2	-18.3	0.1	-8.1	-8.1	-0.1
[Memory est.]									
DRAM									
Bit growth	3.3	3.3	0.0	24.2	24.2	0.0	19.9	19.9	0.0
ASP chg.	45.3	32.2	13.2	150.9	94.8	56.1	11.5	5.5	6.0
Conventional									
Bit growth	3.0	3.0	0.0	18.3	18.3	0.0	17.1	17.1	0.0
ASP chg.	55.0	40.0	15.0	171.4	105.7	65.7	10.3	3.2	7.2
HBM									
Bit growth	7.2	7.2	0.0	132.7	132.7	0.0	46.1	46.1	0.0
ASP chg.	-10.0	-13.0	3.0	9.0	0.2	8.8	15.7	11.9	3.8
NAND									
Bit growth	8.0	8.0	0.0	18.8	18.8	0.0	11.3	11.3	0.0
ASP chg.	45.0	40.0	5.0	120.4	84.3	36.1	-2.5	-11.0	8.5

Source: Mirae Asset Securities Research

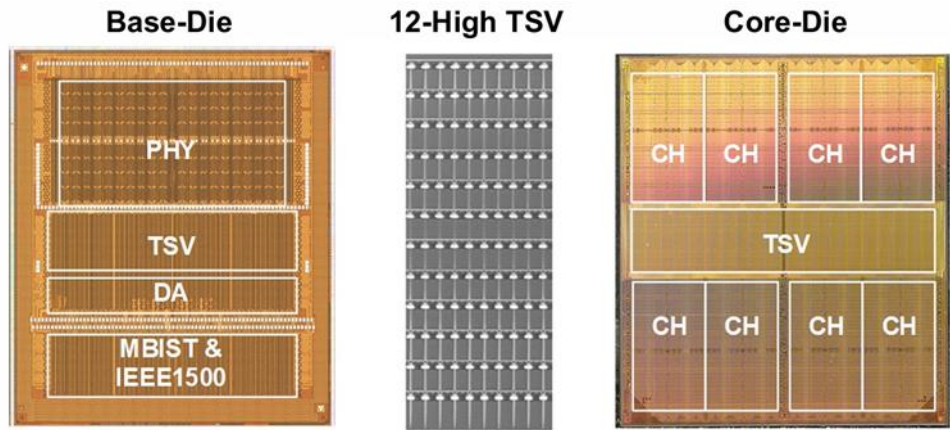
Table 6. SEC: Shareholder return estimates

(Wtr)

	50% of 3Y FCF (W9.6tr/year)			50% of 3Y FCF (W9.8tr/year)			50% of 3Y FCF (W9.8tr/year)		
	2018	2019	2020	2021	2022	2023	2024	2025P	2026F
NP (owners of the parent)	43.9	21.5	26.1	39.2	54.7	14.5	33.6	44.3	202.6
Operating cash flow	67.0	45.4	65.3	65.1	62.2	44.1	73.0	94.6	278.3
Capex	29.6	25.4	37.6	47.1	49.4	57.6	51.4	58.2	66.4
FCF	37.5	20.0	27.7	18.0	12.8	-13.5	21.6	36.5	211.9
% of FCF to be returned to shareholders	50.0	50.0	50.0	50.0	50.0	50.0	50.0	50.0	50.0
Regular dividend pool	18.7	10.0	13.8	9.0	6.4	-6.7	10.8	18.2	106.0
Regular dividend payout	9.6	9.6	9.6	9.8	9.8	9.8	9.8	9.8	9.8
Special dividend pool (cumulative)	9.1	9.5	13.8	-0.8	-4.2	-20.8	1.0	7.6	95.6
Share repurchases	0.9	0.0	0.0	0.0	0.0	0.0	1.8	8.1	0.0
Special dividend payout	0.2	0.0	10.7	0.0	0.0	0.0	0.0	0.0	37.3
Total dividend payout	9.8	9.6	20.3	9.8	9.8	9.8	9.8	9.8	47.1
Dividend payout ratio (%)	22.3	44.7	78.0	25.0	17.9	67.8	29.2	22.2	23.3
Common stock	8.6	8.5	17.9	8.6	8.6	8.6	8.6	8.6	41.4
Preferred stock	1.2	1.2	2.5	1.2	1.2	1.2	1.2	1.2	5.7
Total shareholder returns	10.7	9.6	20.3	9.8	9.8	9.8	11.6	18.0	47.1
No. of shares (ending, mn)									
Common stock	5,970	5,970	5,970	5,970	5,970	5,970	5,970	5,920	5,920
(Treasury stock)	0	0	0	0	0	0	33	92	92
Preferred stock	823	823	823	823	823	823	823	816	816
(Treasury stock)	0	0	0	0	0	0	5	14	14
Adj. DPS (W)									
Common stock	1,416	1,416	2,994	1,444	1,444	1,444	1,446	1,472	7,110
Preferred stock	1,417	1,417	2,995	1,445	1,445	1,445	1,447	1,472	7,111
Avg. share price (W)									(Current)
Common stock	46,830	46,583	57,153	79,156	63,935	67,457	71,610	71,448	190,300
Preferred stock	38,148	37,996	49,780	72,033	58,195	56,442	58,790	57,355	135,100
Dividend yield (%)									
Common stock	3.0	3.0	5.2	1.8	2.3	2.1	2.0	2.1	3.7
Preferred stock	3.7	3.7	6.0	2.0	2.5	2.6	2.5	2.6	5.3
Net cash (ending)	83.6	88.7	103.7	105.3	108.0	82.8	97.3	102.4	228.3

Source: Company data, Mirae Asset Securities Research

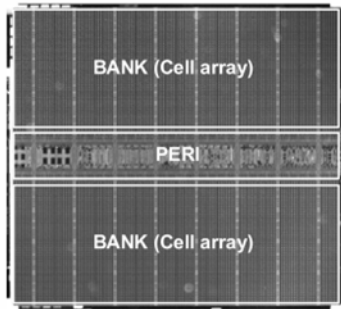
Figure 1. SEC's HBM4 die



Source: Company materials, ISSCC 2026, Mirae Asset Securities Research

Figure 2. SEC's 4F² DRAM die

Chip photo. and array configuration summary



Density	16 Gb, 32 Bank
Cell/BL per unit array	1296 Cell/BL
Cell/WL per unit array	1024 Cell/WL

- 16Gb DRAM is fabricated in a 10nm DRAM process
- Array size is 1296cell/BL and 1056Cell/WL

Source: Company materials, ISSCC 2026, Mirae Asset Securities Research

Samsung Electronics (005930 KS)

Income statement (summarized)

(Wbn)	2024	2025F	2026F	2027F
Revenue	300,871	333,569	561,728	659,010
Cost of revenue	186,562	202,149	200,907	219,684
GP	114,309	131,420	360,821	439,326
SG&A expenses	81,583	87,792	134,262	153,343
OP (adj.)	32,726	43,627	226,559	285,983
OP	32,726	43,627	226,559	285,983
Non-operating profit	4,804	6,253	8,427	17,595
Net financial income	3,915	4,170	7,639	16,799
Net income from associates	751	737	789	796
Pretax profit	37,530	49,880	234,986	303,578
Income tax	3,078	4,653	22,335	28,749
Profit from continuing operations	34,451	45,227	212,651	274,829
Profit from discontinued operations	0	0	0	0
NP	34,451	45,227	212,651	274,829
Attributable to owners	33,621	44,278	208,837	269,900
Attributable to minority interests	830	949	3,814	4,929
Total comprehensive income	51,296	45,815	212,651	274,829
Attributable to owners	50,048	44,309	205,900	266,104
Attributable to minority interests	1,248	1,505	6,751	8,725
EBITDA	75,357	90,539	277,017	339,068
FCF	21,576	31,060	179,120	246,263
EBITDA margin (%)	25.0	27.1	49.3	51.5
OP margin (%)	10.9	13.1	40.3	43.4
Net margin (%)	11.2	13.3	37.2	41.0

Cash flow statement (summarized)

(Wbn)	2024	2025F	2026F	2027F
Operating cash flow	72,983	89,221	245,479	322,967
NP	34,451	45,227	212,651	274,829
Non-cash income/expenses	42,947	50,548	64,249	64,122
Depreciation	39,650	43,609	47,028	49,655
Amortization	2,981	3,303	3,430	3,430
Other	316	3,636	13,791	11,037
Chg. in working capital	-1,568	-4,462	-16,841	-4,151
Chg. in AR & other receivables	-3,139	-8,458	-34,329	-8,462
Chg. in inventory	2,541	-15,228	-40,729	-10,039
Chg. in AP & other payables	-1,539	1,275	9,735	2,400
Income tax	-6,450	-6,729	-22,335	-28,749
Cash flow from investing activities	-85,382	-78,375	-115,918	-91,331
Chg. in PP&E	-51,250	-57,992	-66,359	-76,704
Chg. in intangible assets	-2,319	-4,207	-3,200	-3,200
Chg. in financial assets	-36,218	-14,000	-46,359	-11,427
Other	4,405	-2,176	0	0
Cash flow from financing activities	-7,797	-21,389	-9,714	-9,714
Chg. in financial liabilities	6,644	-2,658	0	0
Chg. in equity	0	0	0	0
Dividends	-10,889	-9,897	-9,714	-9,714
Other	-3,552	-8,834	0	0
Chg. in cash	-15,375	-7,722	110,727	220,275
Beginning balance	69,081	53,706	45,984	156,711
Ending balance	53,706	45,984	156,711	376,986

Source: Company data, Mirae Asset Securities Research estimates

Balance sheet (summarized)

(Wbn)	2024	2025F	2026F	2027F
Current assets	227,062	260,515	507,636	761,532
Cash & equivalents	53,706	45,984	156,711	376,986
AR & other receivables	53,246	65,900	107,803	118,131
Inventory	51,755	64,055	104,784	114,823
Other current assets	68,355	84,576	138,338	151,592
Non-current assets	287,470	307,278	336,288	365,549
Investments in associates	12,592	15,585	25,494	27,937
PP&E	205,945	215,690	235,020	262,069
Intangible assets	23,739	26,412	26,182	25,952
Total assets	514,532	567,793	843,924	1,127,081
Current liabilities	93,326	107,488	168,828	183,948
AP & other payables	30,918	38,265	62,596	68,593
Short-term financial liabilities	15,380	11,017	11,017	11,017
Other current liabilities	47,028	58,206	95,215	104,338
Non-current liabilities	19,014	24,298	36,153	39,074
Long-term financial liabilities	3,950	5,655	5,655	5,655
Other non-current liabilities	15,064	18,643	30,498	33,419
Total liabilities	112,340	131,787	204,981	223,023
Equity attributable to owners	391,688	424,153	623,276	883,461
Capital stock	898	898	898	898
Capital surplus	4,404	4,404	4,404	4,404
Retained earnings	370,513	402,135	601,258	861,444
Minority interests	10,504	11,853	15,667	20,597
Shareholders' equity	402,192	436,006	638,943	904,058

Key valuation metrics/ratios

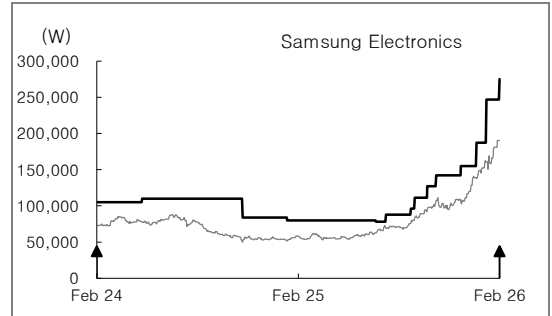
	2024	2025F	2026F	2027F
P/E (x)	10.7	18.3	6.1	4.7
P/CF (x)	4.7	8.4	4.6	3.8
P/B (x)	0.9	1.9	2.0	1.4
EV/EBITDA (x)	3.6	7.6	3.6	2.3
EPS (W)	4,950	6,566	31,005	40,071
CFPS (W)	11,394	14,203	41,110	50,322
BPS (W)	57,930	63,947	93,510	132,138
DPS (W)	1,446	1,465	1,465	1,465
Dividend payout ratio (%)	25.0	19.0	4.0	3.1
Dividend yield (%)	2.7	1.5	1.5	1.5
Revenue growth (%)	16.2	10.9	68.4	17.3
EBITDA growth (%)	66.6	20.1	206.0	22.4
OP growth (%)	398.3	33.3	419.3	26.2
EPS growth (%)	132.3	32.7	372.2	29.2
AR turnover (x)	7.5	6.8	7.9	7.1
Inventory turnover (x)	5.8	5.8	6.7	6.0
AP turnover (x)	15.8	14.6	10.0	8.4
ROA (%)	7.1	8.4	30.1	27.9
ROE (%)	9.0	10.9	39.9	35.8
ROIC (%)	10.6	12.7	59.9	66.8
Debt-to-equity ratio (%)	27.9	30.2	32.1	24.7
Current ratio (%)	243.3	242.4	300.7	414.0
Net debt-to-equity ratio (%)	-23.2	-23.4	-40.6	-54.3
Interest coverage ratio (x)	36.2	77.0	449.9	567.9

Appendix 1

Important disclosures and disclaimers

Two-year rating and TP history

Company	Date	Rating	TP (W)
Samsung Electronics (005930)	02/23/26	Buy	275,000
	01/30/26	Buy	247,000
	01/12/26	Buy	187,000
	12/15/25	Buy	155,000
	10/31/25	Buy	142,000
	10/15/25	Buy	127,000
	09/22/25	Buy	111,000
	09/15/25	Buy	96,000
	08/01/25	Buy	88,000
	07/14/25	Buy	78,000
	02/03/25	Buy	80,000
	11/14/24	Buy	84,000
	05/16/24	Buy	110,000
	01/03/24	Buy	105,000



Stock ratings

Buy	Expected 12-month return: +20% or greater
Hold	Expected 12-month return: Greater than -10% and less than +10%
Sell	Expected 12-month return: -10% or less

Sector ratings

Overweight	Expected to outperform the market over 12 months
Neutral	Expected to perform in line with the market over 12 months
Underweight	Expected to underperform the market over 12 months

As of May 12, 2025, the Trading Buy rating category has been removed from our investment rating system.

Stocks expected to deliver a 12-month return between +10% and less than +20% may be rated either Buy or Hold at the discretion of the research analyst.

Rating and TP history: Share price (—), TP (▬), Not Rated (▣), Buy (▲), Trading Buy (■), Hold (●), Sell (◆)

* Our investment rating is a guide to the expected return of the stock over the next 12 months.

* Outside of the official ratings of Mirae Asset Securities Co., Ltd., analysts may call trading opportunities should technical or short-term material developments arise.

* The TP was determined by the research analyst through valuation methods discussed in this report, in part based on estimates of future earnings.

* TP achievement may be impeded by risks related to the subject securities and companies, as well as general market and economic conditions.

Ratings distribution and investment banking services

	Buy	Trading Buy	Hold	Sell
Ratings distribution	79.76%	1.19%	19.05%	0%
Investment banking services	83.33%	0%	16.67%	0%

* Based on recommendations in the last 12-months (as of December 31, 2025)

Disclosures

As of the publication date, Mirae Asset Securities Co., Ltd. has acted as a liquidity provider for equity-linked warrants backed by shares of Samsung Electronics as an underlying asset; other than this, Mirae Asset Securities has no other special interests in the covered companies.

Analyst certification

The research analysts who prepared this report (the "Analysts") are registered with the Korea Financial Investment Association and are subject to Korean securities regulations. They are neither registered as research analysts in any other jurisdiction nor subject to the laws or regulations thereof. Each Analyst responsible for the preparation of this report certifies that (i) all views expressed in this report accurately reflect the personal views of the Analyst about any and all of the issuers and securities named in this report and (ii) no part of the compensation of the Analyst was, is, or will be directly or indirectly related to the specific recommendations or views contained in this report. Mirae Asset Securities Co., Ltd. ("Mirae Asset Securities") policy prohibits its Analysts and members of their households from owning securities of any company in the Analyst's area of coverage, and the Analysts do not serve as an officer, director, or advisory board member of the subject companies. Except as otherwise specified herein, the Analysts have not received any compensation or any other benefits from the subject companies in the past 12 months and have not been promised the same in connection with this report. Like all employees of Mirae Asset Securities, the Analysts receive compensation that is determined by overall firm profitability, which includes revenues from, among other business units, the institutional equities, investment banking, proprietary trading, and private client divisions. At the time of publication of this report, the Analysts do not know or have reason to know of any actual, material conflict of interest of the Analyst or Mirae Asset Securities except as otherwise stated herein.

Disclaimers

This report was prepared by Mirae Asset Securities, a broker-dealer registered in the Republic of Korea and a member of the Korea Exchange. Information and opinions contained herein have been compiled in good faith and from sources believed to be reliable, but such information has not been independently verified and Mirae Asset Securities makes no guarantee, representation or warranty, express or implied, as to the fairness, accuracy, completeness, or correctness of the information and opinions contained herein or of any translation into English from the Korean language. In case of an English translation of a report prepared in the Korean language, the original Korean language report may have been made available to investors in advance of this report.

The intended recipients of this report are sophisticated institutional investors who have substantial knowledge of the local business environment, its common practices, laws, and accounting principles, and no person whose receipt or use of this report would violate any laws or regulations or subject Mirae Asset Securities or any of its affiliates to registration or licensing requirements in any jurisdiction shall receive or make any use hereof.

This report is for general information purposes only and is not and shall not be construed as an offer or a solicitation of an offer to effect transactions in any

securities or other financial instruments. The report does not constitute investment advice to any person, and such person shall not be treated as a client of Mirae Asset Securities by virtue of receiving this report. This report does not take into account the particular investment objectives, financial situations, or needs of individual clients. The report is not to be relied upon in substitution for the exercise of independent judgment. Information and opinions contained herein are as of the date hereof and are subject to change without notice. The price and value of the investments referred to in this report and the income from them may depreciate or appreciate, and investors may incur losses on investments. Past performance is not a guide to future performance. Future returns are not guaranteed, and a loss of original capital may occur. Mirae Asset Securities, its affiliates, and their directors, officers, employees, and agents do not accept any liability for any loss arising out of the use hereof.

Mirae Asset Securities may have issued other reports that are inconsistent with, and reach different conclusions from, the opinions presented in this report. The reports may reflect different assumptions, views, and analytical methods of the analysts who prepared them. Mirae Asset Securities may make investment decisions that are inconsistent with the opinions and views expressed in this research report. Mirae Asset Securities, its affiliates, and their directors, officers, employees, and agents may have long or short positions in any of the subject securities at any time and may make a purchase or sale, or offer to make a purchase or sale, of any such securities or other financial instruments from time to time in the open market or otherwise, in each case either as principals or agents. Mirae Asset Securities and its affiliates may have had, or may be expecting to enter into, business relationships with the subject companies to provide investment banking, market-making, or other financial services as are permitted under applicable laws and regulations.

No part of this document may be copied or reproduced in any manner or form or redistributed or published, in whole or in part, without the prior written consent of Mirae Asset Securities. For further information regarding company-specific information as it pertains to the representations and disclosures in this Appendix 1, please contact compliance@miraeasset.us.com or +1 (212) 407-1000.

Distribution

United Kingdom: This report is being distributed by Mirae Asset Securities (UK) Ltd. in the United Kingdom only to (i) investment professionals falling within Article 19(5) of the Financial Services and Markets Act 2000 (Financial Promotion) Order 2005 (the "Order"), and (ii) high net worth companies and other persons to whom it may lawfully be communicated, falling within Article 49(2)(A) to (E) of the Order (all such persons together being referred to as "Relevant Persons"). This report is directed only at Relevant Persons. Any person who is not a Relevant Person should not act or rely on this report or any of its contents.

United States: Mirae Asset Securities is not a registered broker-dealer in the United States and, therefore, is not subject to U.S. rules regarding the preparation of research reports and the independence of research analysts. This report is distributed in the U.S. by Mirae Asset Securities (USA) Inc., a member of FINRA/SIPC, to "major U.S. institutional investors" in reliance on the exemption from registration provided by Rule 15a-6(b)(4) under the U.S. Securities Exchange Act of 1934, as amended. All U.S. persons that receive this document by their acceptance hereof represent and warrant that they are a major U.S. institutional investor and have not received this report under any express or implied understanding that they will direct commission income to Mirae Asset Securities or its affiliates. Any U.S. recipient of this document wishing to effect a transaction in any securities discussed herein should contact and place orders with Mirae Asset Securities (USA) Inc. Mirae Asset Securities (USA) Inc. accepts responsibility for the contents of this report in the U.S., subject to the terms hereof, to the extent that it is delivered to a U.S. person other than a major U.S. institutional investor. Under no circumstances should any recipient of this research report effect any transaction to buy or sell securities or related financial instruments through Mirae Asset Securities. The securities described in this report may not have been registered under the U.S. Securities Act of 1933, as amended, and, in such case, may not be offered or sold in the U.S. or to U.S. persons absent registration or an applicable exemption from the registration requirements.

Hong Kong SAR: This report is distributed in Hong Kong SAR by Mirae Asset Securities (HK) Limited, which is regulated by the Hong Kong Securities and Futures Commission. The contents of this report have not been reviewed by any regulatory authority in Hong Kong SAR. This report is for distribution only to professional investors within the meaning of Part I of Schedule 1 to the Securities and Futures Ordinance of Hong Kong SAR (Cap. 571, Laws of Hong Kong SAR) and any rules made thereunder and may not be redistributed in whole or in part in Hong Kong SAR to any person.

India: This report is being distributed by Mirae Asset Capital Markets (India) Private Limited ("MACM") in India to the customers based in India and is personal information only for those authorised recipient(s). MACM is inter alia a Securities and Exchange Board of India ("SEBI") registered Research Analyst in India and is not registered outside India. MACM and Mirae Asset, Korea are group entities. MACM makes no guarantee, representation or warranty, express or implied, as to the fairness, accuracy, completeness or correctness of the information and opinions contained herein. The user assumes the entire risk of any use made of this information. This report has been provided for assistance only and is not intended to be and must not alone be taken as the basis for an investment decision. Recipient must read the entire Appendix 1 to the report carefully for Important Disclosures & Disclaimers.

All other jurisdictions: Customers in all other countries who wish to effect a transaction in any securities referenced in this report should contact Mirae Asset Securities or its affiliates only if distribution to or use by such customer of this report would not violate applicable laws and regulations and not subject Mirae Asset Securities and its affiliates to any registration or licensing requirement within such jurisdiction.

Mirae Asset Securities International Network

Mirae Asset Securities Co., Ltd. (Seoul)

One-Asia Equity Sales Team
Mirae Asset Center 1 Building
26 Eulji-ro 5-gil, Jung-gu, Seoul 04539
Korea

Tel: 82-2-3774-2124

Mirae Asset Securities (USA) Inc.

810 Seventh Avenue, 37th Floor
New York, NY 10019
USA

Tel: 1-212-407-1000

Mirae Asset Securities (Singapore) Pte. Ltd.

6 Battery Road, #11-01
Singapore 049909
Republic of Singapore

Tel: 65-6671-9845

Mirae Asset Investment Advisory (Beijing) Co., Ltd

2401B, 24th Floor, East Tower, Twin Towers
B12 Jianguomenwai Avenue, Chaoyang District
Beijing 100022
China

Tel: 86-10-6567-9699

Ho Chi Minh Representative Office

7F, Saigon Royal Building
91 Pasteur St.
District 1, Ben Nghe Ward, Ho Chi Minh City
Vietnam

Tel: 84-8-3910-7715

Mirae Asset Securities (HK) Ltd.

Units 8501, 8507-8508, 85/F
International Commerce Centre
1 Austin Road West
Kowloon
Hong Kong SAR
Tel: 852-2845-6332

Mirae Asset Wealth Management (Brazil) CCTVM

Rua Funchal, 418, 18th Floor, E-Tower Building
Vila Olimpia
Sao Paulo - SP
04551-060
Brazil
Tel: 55-11-2789-2100

Mirae Asset Securities (Vietnam) LLC

7F, Saigon Royal Building
91 Pasteur St.
District 1, Ben Nghe Ward, Ho Chi Minh City
Vietnam

Tel: 84-8-3911-0633 (ext.110)

Beijing Representative Office

2401A, 24th Floor, East Tower, Twin Towers
B12 Jianguomenwai Avenue, Chaoyang District
Beijing 100022
China

Tel: 86-10-6567-9699 (ext. 3300)

Mirae Asset Capital Markets (India) Pvt Ltd

1st Floor, Tower 4, Equinox Business Park,
LBS Marg, Off BKC, Kurla (West), Mumbai - 400 070
India

Tel: 91-22-62661300 / 48821300

Mirae Asset Securities (UK) Ltd.

41st Floor, Tower 42
25 Old Broad Street,
London EC2N 1HQ
United Kingdom

Tel: 44-20-7982-8000

PT. Mirae Asset Sekuritas Indonesia

District 8, Treasury Tower Building Lt. 50
Sudirman Central Business District
Jl. Jend. Sudirman, Kav. 52-54
Jakarta Selatan 12190
Indonesia
Tel: 62-21-5088-7000

Mirae Asset Securities Mongolia UTsk LLC

#406, Blue Sky Tower, Peace Avenue 17
1 Khoroo, Sukhbaatar District
Ulaanbaatar 14240
Mongolia

Tel: 976-7011-0806

Shanghai Representative Office

38T31, 38F, Shanghai World Financial Center
100 Century Avenue, Pudong New Area
Shanghai 200120
China

Tel: 86-21-5013-6392